

Digital Compression Load Cell – Type FD



CE

0-50.000kg

Special Features

- Robust capacitive technology
- Stainless steel
- High tolerance of up to 400% overload
- Hermetically sealed to IP68
- Laser welded
- Hygienic design and installation
- Withstands welding voltages and ESD
- Cable length up to 100meters
- Load cell cable replaceable
- Calibration independent of cable length
- Easy mechanical and electrical installation

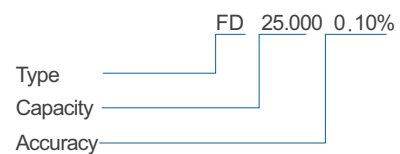


Applications

- Tank weighing
- Process weighing
- Level measurement
- Filling and dosing
- Large Vessels
- Offshore applications
- Heavy duty applications



Order information

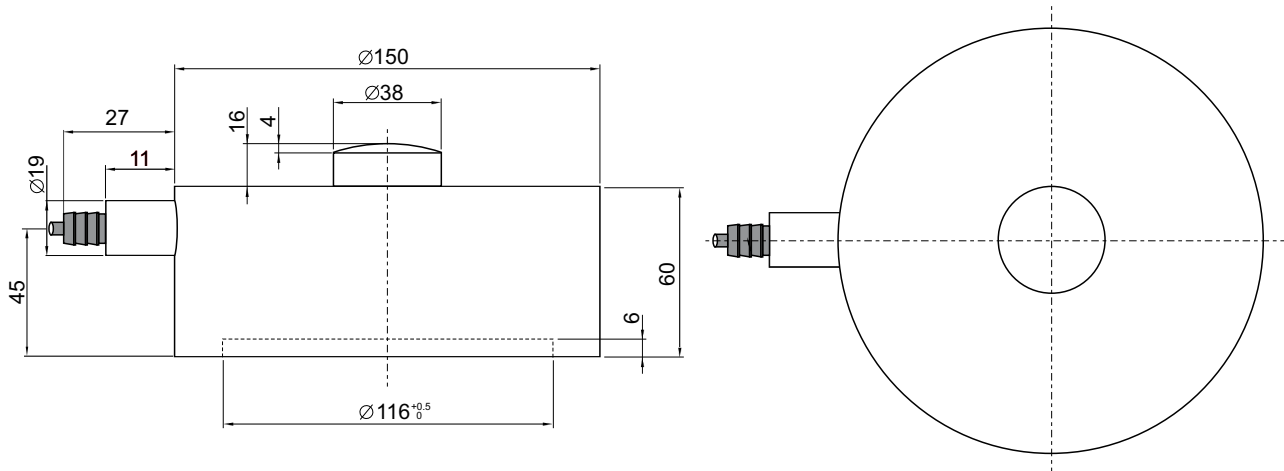


Options

- Base plate available
- Load cell cable length 10, 20, 50 or 100meters

Digital Compression Load Cell – Type FD

Dimensions (mm)



Parameter	Unit	0.10%	0.05%**
Rated capacity (E _{max})	kg	6.000, 8.000, 10.000 15.000, 20.000, 25.000, 50.000	
Safe overload limit	% of E _{max}	200 to 400	
Safe sideload limit	% of E _{max}	200 to 500	
Minimum dead load	% of E _{max}	0	
Accuracy	% of E _{max}	0.100	0.050
Repeatability	% of E _{max}	0.030	0.020
Hysteresis	% of E _{max}	0.055	0.040
Creep 30 min.	% of E _{max}	0.060	0.040
Temperature effect on zero	% /10°C	0.060	0.045
Temperature effect on sensitivity	% /10°C	0.060	0.045
Compensated temperature range	°C	-10 to 50	
Operating temperature range	°C	-50 to 70 (100*)	
Deflection at E _{max}	mm	Max 0.10	
Measuring rate	Hz	200	
Supply	Vdc	24Vdc ±10%	
Internal resolution	Bit	24	
Material		Stainless Steel 17-4 PH and AISI 316	
Protection		IP68	
Cable		6meter standard coaxial RG-58 (Ø6mm) with BNC connector	
Maximum cable length	m	100	
Weight	kg	5.7	
Output options		Profibus DP, DeviceNet, Modbus ASCII/RTU, EtherCAT EtherNet/IP, RS232, RS485/422, 4-20mA, 0-10Vdc	

* with Teflon cable

** higher accuracies available on request



LENOX Automação e Tecnologia
Tel.: (11) 3803-8393
vendas@lenox.ind.br
www.lenox.ind.br