

Digital Compression Load Cell – Type GDS



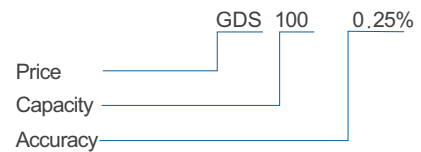
Special Features

- Robust capacitive technology
- Patented high reliability capacitive sensor
- High tolerance of up to 400% overload
- Stainless steel
- Hermetically sealed to IP69K
- Laser welded
- Withstands welding voltages and ESD
- Cable length up to 100meters
- Load cell cable replaceable
- Pre-calibrated with signal in kg or kN
- Calibration independent of cable length
- Easy mechanical and electrical installation

Applications

- Silo weighing
- Level measurement
- Process weighing
- Offshore applications
- Heavy duty applications

Order information



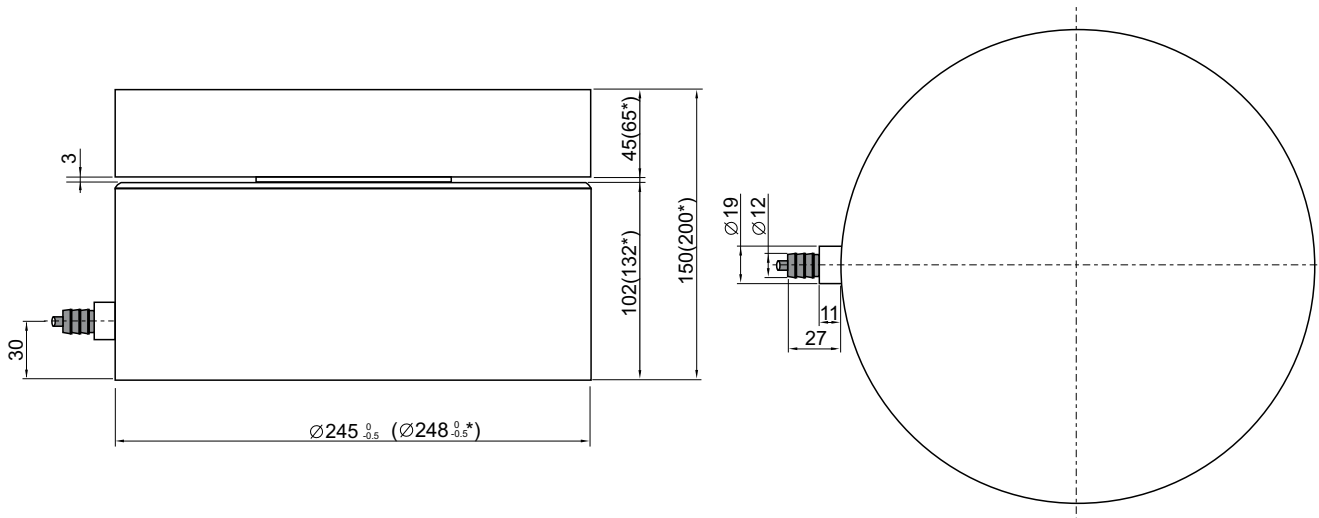
Options

- Load cell cable length 10, 20, 50 or 100meters
- Customized versions available



Digital Compression Load Cell – Type GDS

Dimensions (mm)



*200 to 500ton version

2000 Generation Load Cells

Parameter	Unit	0.25%
Rated capacity (E _{max})	ton	100, 200, 300, 400, 500
Safe overload limit	% of E _{max}	up to 400
Safe sideload limit	% of E _{max}	up to 500
Minimum dead load	% of E _{max}	0
Accuracy	% of E _{max}	0.25
Repeatability	% of E _{max}	0.06
Hysteresis	% of E _{max}	0.08
Creep 30 min.	% of E _{max}	0.08
Temperature effect on zero	% /10°C	0.08
Temperature effect on sensitivity	% /10°C	0.08
Compensated temperature range	°C	-10 to 50
Operating temperature range	°C	-50 to 70 (100°)
Deflection at E _{max}	mm	Max 0.10
Measuring rate	Hz	200
Supply	Vdc	24Vdc ±10%
Internal resolution	Bit	24
Material		Stainless Steel 17-4 PH and AISI 316
Protection		IP68
Cable		6meter standard coaxial RG-58 (Ø6mm) with BNC connector
Maximum cable length	m	100
Weight	kg	65 / 75**
Output options		Profibus DP, DeviceNet, Modbus ASCII/RTU, EtherCAT EtherNet/IP, RS232, RS485/422, 4-20mA, 0-10Vdc

* with Teflon cable

** 100ton / 200-500ton



LENOX Automação e Tecnologia
Tel.: (11) 3803-8393
vendas@lenox.ind.br
www.lenox.ind.br